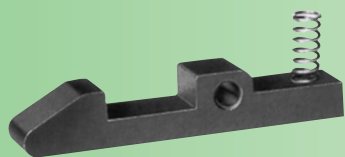




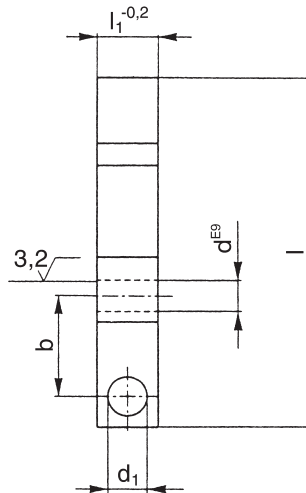
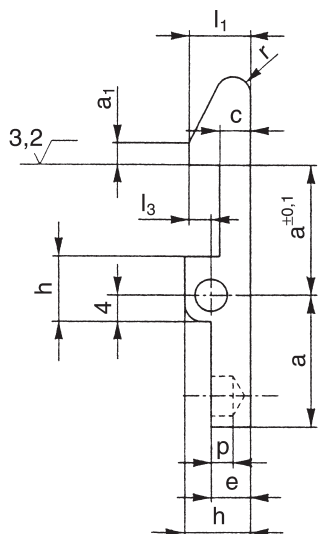
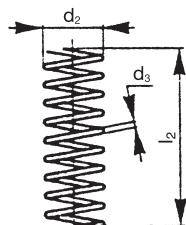
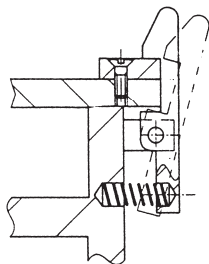
7560



## Pestillo articulado

Material: F 1140 pavonado.

DIN 6310

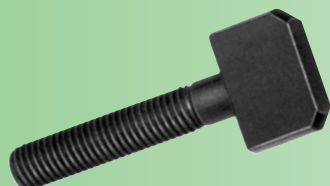


Ejemplo de pedido: ULM 7560-01

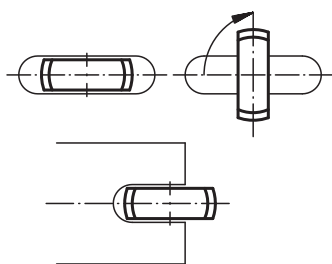
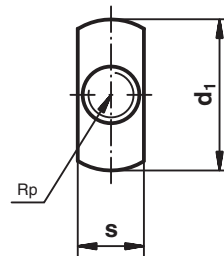
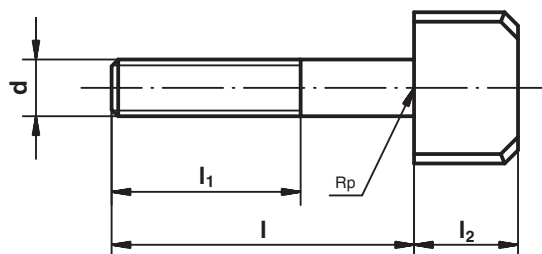
Referencia	l	l <sub>1</sub>	h	d	a	b	c	a <sub>1</sub>	d <sub>1</sub>	p	d <sub>2</sub>	d <sub>3</sub>	l <sub>2</sub>	g
7560-01	45	8	9,5	4	15	11	4	2	5,5	2	4,6	0,6	16	15
7560-02	60	10	12	5	20	15	5	3	7	3	5,8	0,8	18	32
7560-03	80	14	15	6	30	23	7	5	9	5	7,4	1	22	80



7570



## Tornillo de cierre

Material: 7460: F 1140 pavonado.  
7460-3: Acero inoxidable.

Ejemplo de pedido: ULM 7570-06

Referencia Acero pavonado	Referencia Acero inoxidable	d	d <sub>1</sub>	l	l <sub>1</sub>	l <sub>2</sub>	s	g
7570-06	7570-3.06	M 6	20	30	25	14	6,5	19
7570-08	7570-3.08	M 8	25	40	30	16	8,5	36
7570-10	7570-3.10	M10	28	50	40	16	10,5	51
7570-12	7570-3.12	M12	32	60	50	20	12,5	100